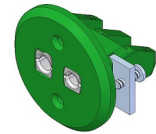


TE1044 Standard panel jack round

Application

Female panel connector	Thermocouple and RTD circuits
Contacts	Springloaded thermocouple contacts
Materials	Glass filled thermoplastic body with original thermocouple material contacts



Temperature rating

Temperature limit	Maximum 220°C
--------------------------	---------------

Construction

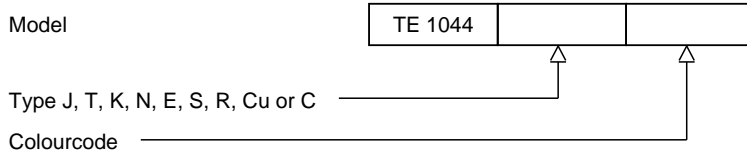
Body	Glass filled thermoplastic material
Design	Stainless steel bracket mounted with 2 screws
Molded barriers	Prevent short circuit

Wire size

Accepts wires	From 0,2mm. to 2,0mm.
----------------------	-----------------------

Ordering code

*This datasheet is purely indicative, build-up of model code may vary from this datasheet.



H9-2Rev.0 7/07



thermo-electra
temperature sensor solutions

Thermo Electra B.V.
Weteringweg 10
2641KM Pijnacker
The Netherlands

Phone +31 (0)15 - 3621200
Fax +31 (0)15 - 3694082
Email sales@thermo.nl
<http://www.thermo-electra.com>

