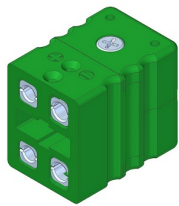


# TE1010D Standard jack dual circuit



## Applications

**Connector** Connector for thermocouple and RTD circuits. Is very well suited for 4-wire RTD-'s. Pin design ensures good contact even in demanding applications

## Construction

**Temperature limit** Maximum 220°C

**Design** Rugged one body design with central cover screw for quick wiring

**Body material** Glass filled thermoplastic body with original thermocouple material pins and springloaded inserts

**Pins** Polarized pins ensure proper connection

**Molded barriers** Prevent short circuit

**Termination** Stainless Steel screws with Phillips head

**Wire size**

Accepts wires up to 1.6mm

Maximum cable diameter 8.0mm

**Colourcode**

Available in all colour code standards incl. NFE, BS, JIS, etc

## Ordering code

\*This datasheet is purely indicative, build-up of model code may vary from this datasheet.

Model

TE 1010D		
----------	--	--

Type J,T,K,N,E,S,R,Cu or C

Colourcode

H9-1 Rev.0 7/07



**thermo-electra**  
temperature sensor solutions

Thermo Electra B.V.  
Weteringweg 10  
2641KM Pijnacker  
The Netherlands

Phone +31 (0)15 - 3621200  
Fax +31 (0)15 - 3694082  
Email [sales@thermo.nl](mailto:sales@thermo.nl)  
<http://www.thermo-electra.com>

