



Construction

ATEX execution	II 2 G Ex eb IIC T6...T1 Gb
ATEX certificate	DEKRA 17ATEX0123 X
IECEX execution	Ex eb IIC T6...T1 Gb
IECEX certificate	IECEX DEK 17.0046X
Suitable for zone	1 and 2
Ingress protection	IP65 / IEC529
Ambient temp. range	-45°C...+80°C, this can be limited depending on the materials applied such as cable, connection head or junction box.

Sheath

Construction	Mineral insulated (MgO)
Material	SS316 standard, other materials possible
Diameter	Customer to specify
Length	Customer to specify

Sensor

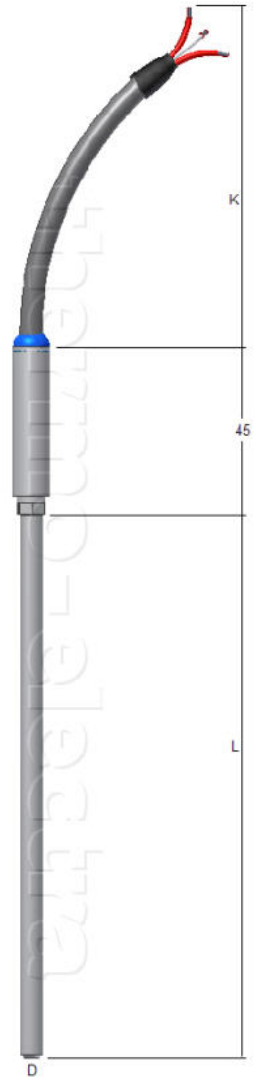
Execution	Single or Duplex Pt100
Connection	3-wire standard, 4-wire optional
Accuracy	According IEC 60751 Cl. B, A or AA
Measuring range	-20°C...+400°C standard, -220°C...+600°C optional

Sealpot

Length	45mm
Diameter	To suit cable diameter

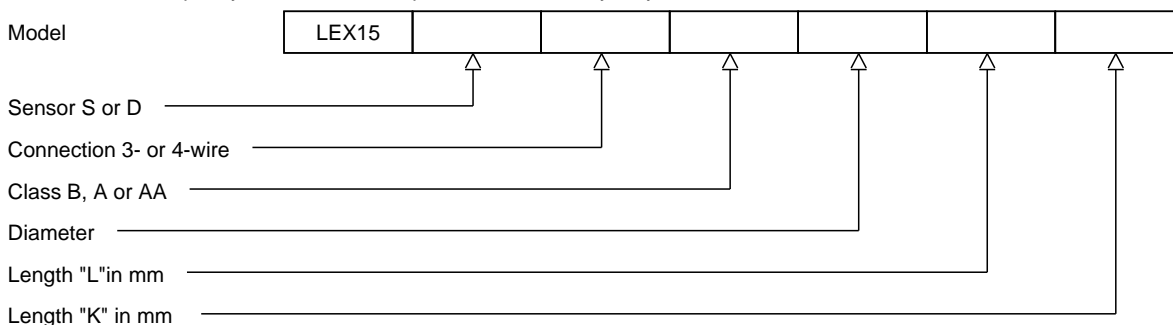
Cable

Insulation	PVC standard, other materials possible
Cable length	Customer to specify
Option	PUR, Silicone or PTFE insulated cable



Ordering code

*This datasheet is purely indicative, build-up of model code may vary from this datasheet.



H3-1 Rev.0 7/07

