

KE 2084 General purpose resistance thermometer

Sheath

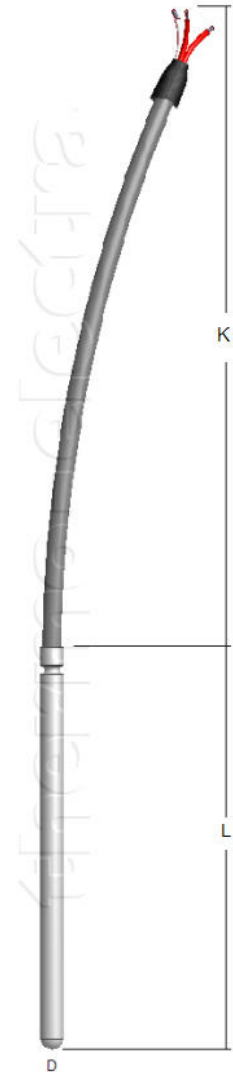
Construction	Closed-end tube
Material	SS 316 - (Wst 1.4401) standard, other materials possible
Diameter	Customer to specify
Standard diameters	2.0, 3.0, 3,2, 4.0, 4,8 or 6.0mm, customer to specify
Length	Customer to specify
Ingress protection	IP65 sealed cable junction

Lead wire

Lead wire	Silicone rubber, Teflon FEP or PVC, customer to specify
Lead wire length	Customer to specify

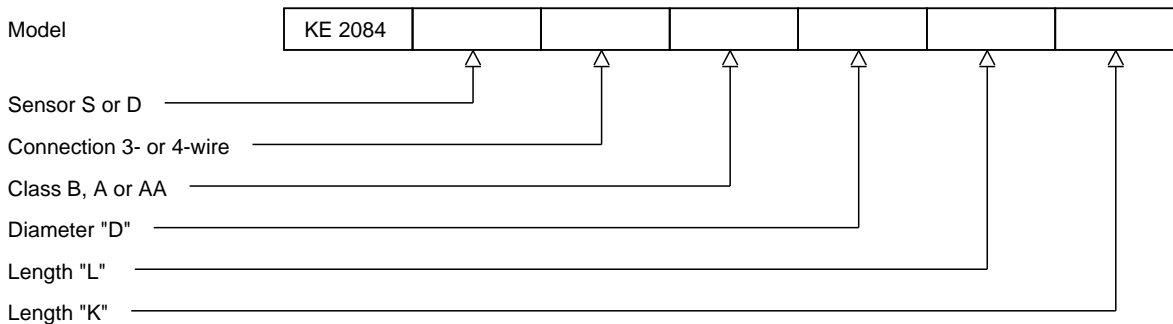
Sensor

Sensor	Single or Duplex Pt100
Accuracy	According IEC 60751 Cl. B, A or AA
Style / Connection	3-wire system standard, 4-wire system optional
Range	Standard -20 / +400°C, optional -220 / +600°C
Testing	Tested at 500 Vdc @ 20°C
Insulation resistance	Minimum 100Mohm



Ordering code

*This datasheet is purely indicative, build-up of model code may vary from this datasheet.



H2-1 Rev.0 7/07



thermo-electra
temperature sensor solutions

Thermo Electra B.V.
Weteringweg 10
2641KM Pijnacker
The Netherlands

Phone +31 (0)15 - 3621200
Fax +31 (0)15 - 3694082
Email sales@thermo.nl
<http://www.thermo-electra.com>

