

# TE1092 Cable Clamp

## Application

**Application** Cable and Wire clampbracket will provide optimum strainrelief

**Construction** Allows a large difference in maximum and minimum cable and wire diameters

## Connectors

**Suitable for** This strain relief is designed to fit several type connectors. standard and high temperature connectors have the same mounting dimensions, other connectors such as ceramic or dual connectors have different dimensions, to specify when ordering

## Material

**Screws and bracket** All Stainless Steel

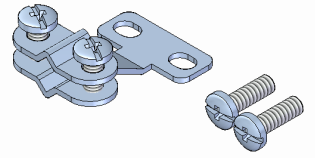
## Ordering

**Connector type** Mini (M), or Standard (S) to specify

**Connector material** To fit:Standard and High temp(S), Ceramic (C), Dual standard (D) or Dual ceramic (DC), please specify

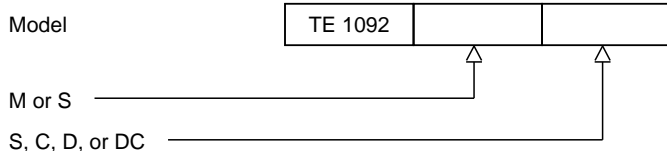
## Options

**Options** Special U type brackets for dual standard connectors. Also crimp or solder inserts designed for soldering or crimping on mineral insulated cable or crimping on insulated wire are available



## Ordering code

\*This datasheet is purely indicative, build-up of model code may vary from this datasheet.



H9-1 Rev.0 7/07



**thermo-electra**  
temperature sensor solutions

Thermo Electra B.V.  
Weteringweg 10  
2641KM Pijnacker  
The Netherlands

Phone +31 (0)15 - 3621200  
Fax +31 (0)15 - 3694082  
Email sales@thermo.nl  
<http://www.thermo-electra.com>

