

CA 2001 Resistance thermometer

Protection tube

Construction	Closed-end tube, max. 60bar and mediavelocity of max. 25m/sec (air) or 3m/sec (water), depending of length
Diameter	9.0mm standard, other diameters possible
Material	SS 316 - (Wst 1.4401) standard, other materials possible
Insertion length	Customer to specify
Process connection	M20x1.5, 1/2"BSP (G1/2"), 1/2"NPT or other threads possible

Connection head

Material	Aluminium, plastic or stainless steel
Cable entry	M20x1.5 cable gland standard, other threads possible

Measuring insert

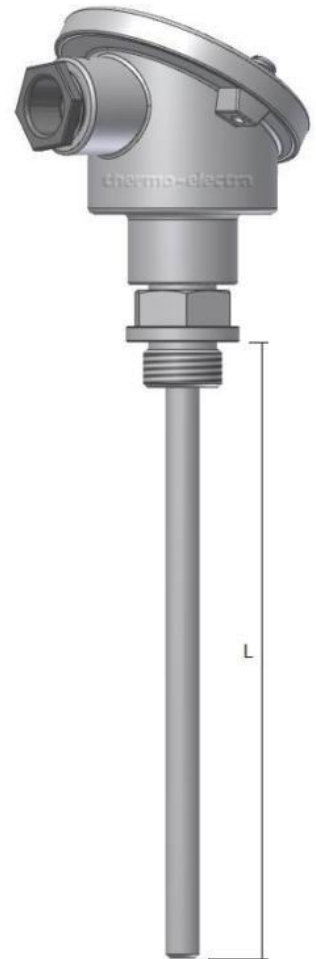
Type	MI 2025
Construction	Springloaded and replaceable
Diameter	6.0mm standard, other diameters possible
Length	E = L+45 mm
Material	SS 316 - (Wst 1.4401) standard, other materials possible

Sensor

	Single or Duplex Pt100
Accuracy	According IEC 60751 Cl. B, A or AA
Style / Connection	3-wire system standard, 4-wire system optional
Range	-20 / +400°C standard, -220 / +600°C optional

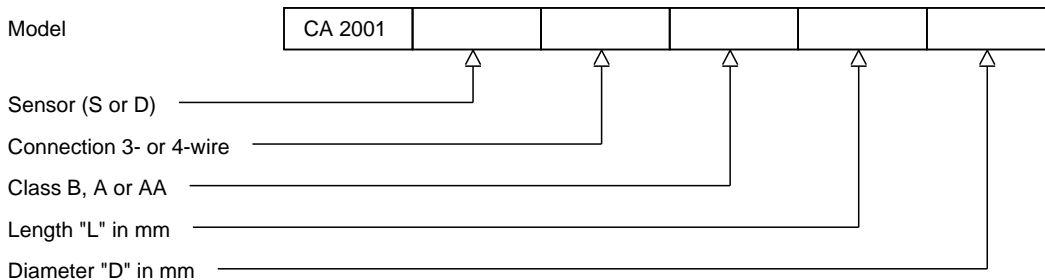
Options

Transmitter 4-20mA	In-Head Transmitter, standard or Ex version. Please select from our standard range or specify your own standard
Swing-Cover head	DAN, transmitter direct mounted on measuring insert
High Swing-Cover head	DAN-H, transmitter in cover, insert with ceramic block



Ordering code

*This datasheet is purely indicative, build-up of model code may vary from this datasheet.



H2-1 Rev.0 7/07



thermo-electra
temperature sensor solutions

Thermo Electra B.V.
Weteringweg 10
2641KM Pijnacker
The Netherlands

Phone +31 (0)15 - 3621200
Fax +31 (0)15 - 3694082
Email sales@thermo.nl
<http://www.thermo-electra.com>

