



FT 3025 Flanged Thermowell - Tapered to DIN 43772 Form 4F

Thermowell

Design Drilled bar stock with welded process flange
 Materials SS 316 - (Wst 1.4401) standard

Stem / Shaft

Diameter Tapered from 24mm to 12.5mm at the tip
 Bore 7mm.
 Bottom thickness 5 mm
 Female connection M18 x 1.5

Flange

Flange facing Flat Face, Raised Face, Ring Type Joint, Tongue Face, or Groove Face
 Standards ASME B16.5, DIN 2526/2527, or EN 1092-1
 Flange weld Full Penetration



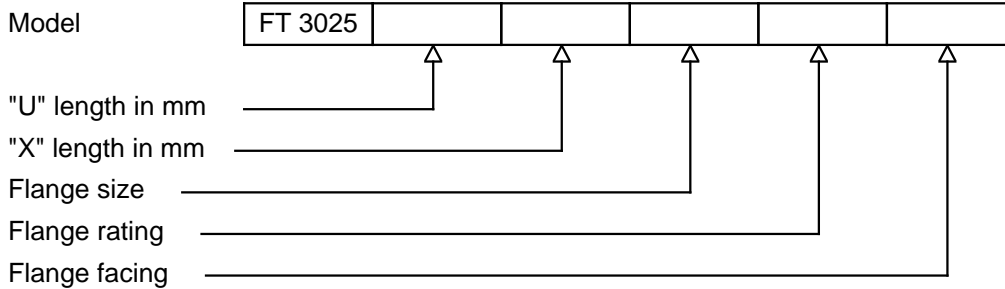
Dimensions

Insertion length "U" To specify
 Lagging "X" To specify, standard 60mm
 Flange size To specify
 Flange rating To specify
 Flange facing To specify

Options

Other materials and dimensions
 Din 43772 Form 4FS, bore 3.5mm, M14x1.5
 Diameter from 18mm to 9mm at the tip.
 Tagging
 Wake frequency calculation

Ordering code



H3-1 Rev.0 7/07



thermo-electra
 measurement and control technics

PO BOX 73
 2640 AB Pijnacker
 The Netherlands

Phone +31 (0)15 - 3621200
 Fax +31 (0)15 - 3694082
 Email sales@thermo.nl
 Internet <http://www.thermo-electra.com>